

TRAILER

SPECIFICATIONS

Length	53'	16.15 m
Width	8' 2"	2.49 m
Height	13' 5"	4.09 m
Storage Space	38' x 4' 6" x 7' 4"	11.60 x 1.40 x 2.20 m
Storage Compartment	10" x 13" x 42"	0.25 x 0.33 x 1.10 m
Storage Capacity	5000 lb	2268 kg
Weight	42100 lb	19100 kg

STAGE FLOOR

Length and Depth	40' x 39' 2"	12.20 x 11.94 m
Length and Depth with Extension Platforms	64' x 39' 2"	19.51 x 11.94 m
Height from Ground	3' 6" to 6'	1.07 to 1.83 m
Design Live Load	100 lb/ft ²	490 kg/m ²
Type of Surface	Plywood on steel	

ROOF

Length and Depth	42' 4" x 40' 9"	12.91 x 12.43 m
Clearance (Inclined roof)	22' 9" to 25' 5"	6.93 to 7.76 m
Maximum Height from Banners	32' 4"	9.86 m
Type of Surface	Fibreglass bonded on steel	
Load Bearing Capacity †	26000 lb	11793 kg
4 Rigging Points	2000 lb each	907 kg each
12 Rigging Points	1000 lb each	454 kg each
8 Rigging Points	500 lb each	227 kg each
2 Trusses - Central Roof (T1)	3000 lb each	1360 kg each
2 Trusses - Downstage and Upstage (T2)	2000 lb each	907 kg each
2 Lateral Overhang Rigging Points	2000 lb each at 6'	907 kg each at 1.83 m
2 Bi-directional Rigging Beams *	4000 lb	1814 kg

PRACTICAL ASPECTS

Installation Time once Levelling Complete	2.5 Hours - Less without windwalls
Personnel Required	1 Certified technician and 3 stagehands
Site Preparation	None
Heavy Machinery Required	None
Mode of Transportation	1 Fifth-wheel tractor
Gust Wind Resistance	60 mph (97 km/h) with windwall or 90 mph (145 km/h) without windwall
Promotional Visibility *	Rolling billboard or multiple banner options
Windwalls *	Weatherproof, fire-retardant vinyl or scrim (blow-through material)
Vertical Banner Supports *	Quick to install - Offers close to 834 sqft. (77.5 m ²) of promotional space
Floor Extension Platforms *	Integrated brackets - easy to install

Values indicated are nominal. Due to STAGELINE'S product improvement policy, technical specifications may change without notice.
 † Please refer to rigging plan.
 * Offered in option.

450 589-1063

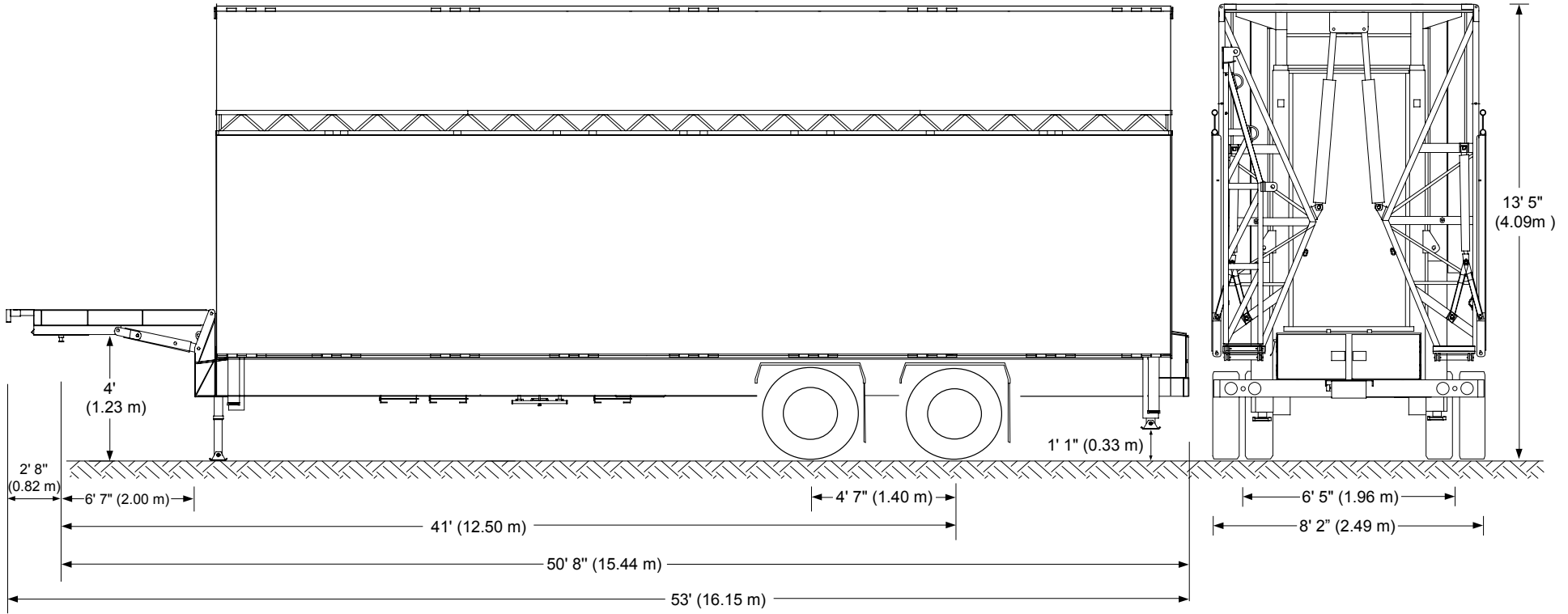
Fax: 450 589-1711

1-800-267-8243 in N.A.

info@stageline.com

www.stageline.com

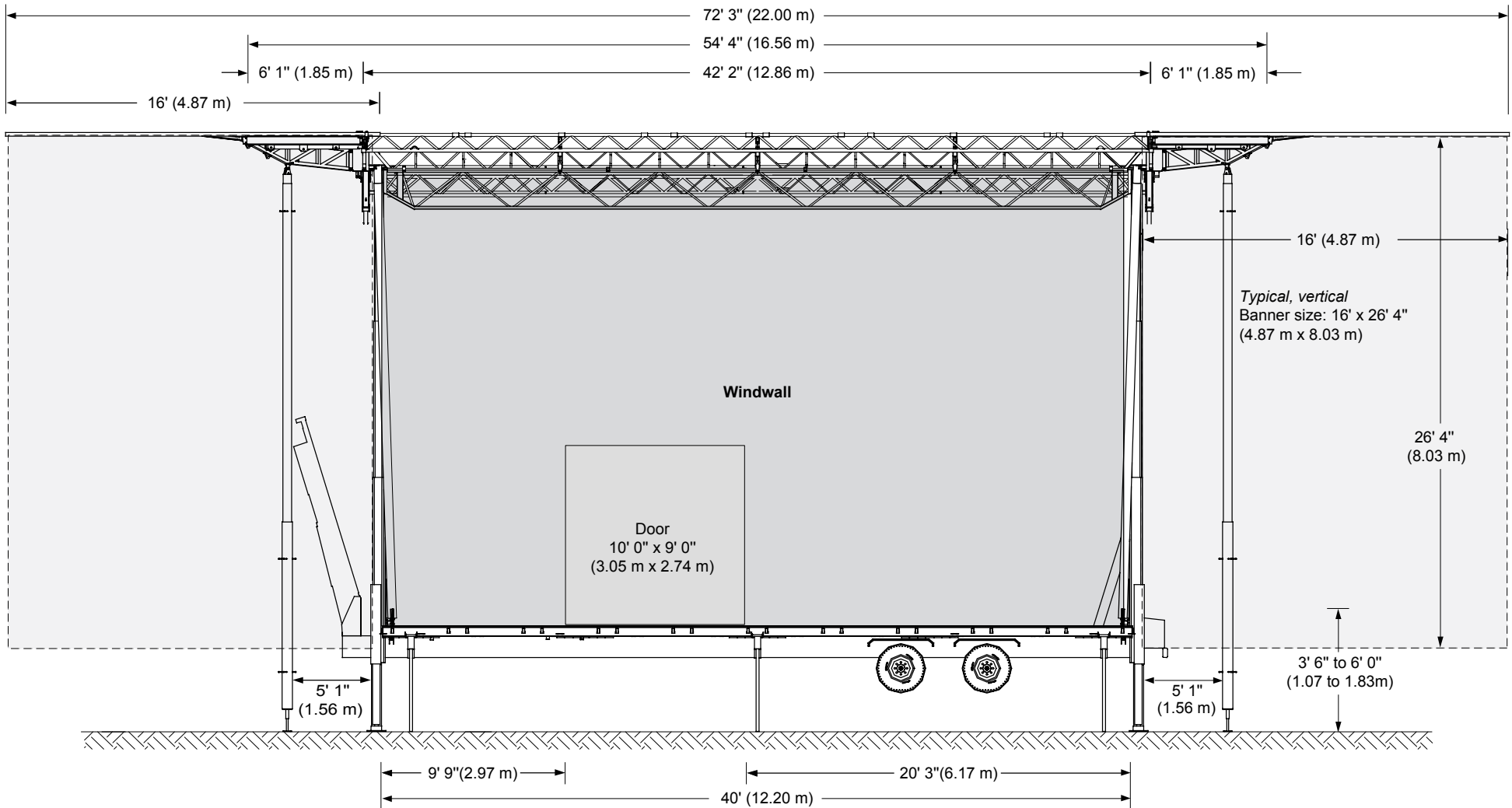
Stageline SL 320



Mass	Unladen		Laden	
	Lb	Kg	Lb	Kg
Total Mass	42 100	19 100	47 100	21 360
Mass on Axle	33 800	15 330	-	-
Allowable Load on Axle	-	-	34 000	15 420
Mass on Gooseneck	8 300	3 770	-	-
Allowable Load on Gooseneck	-	-	-	-

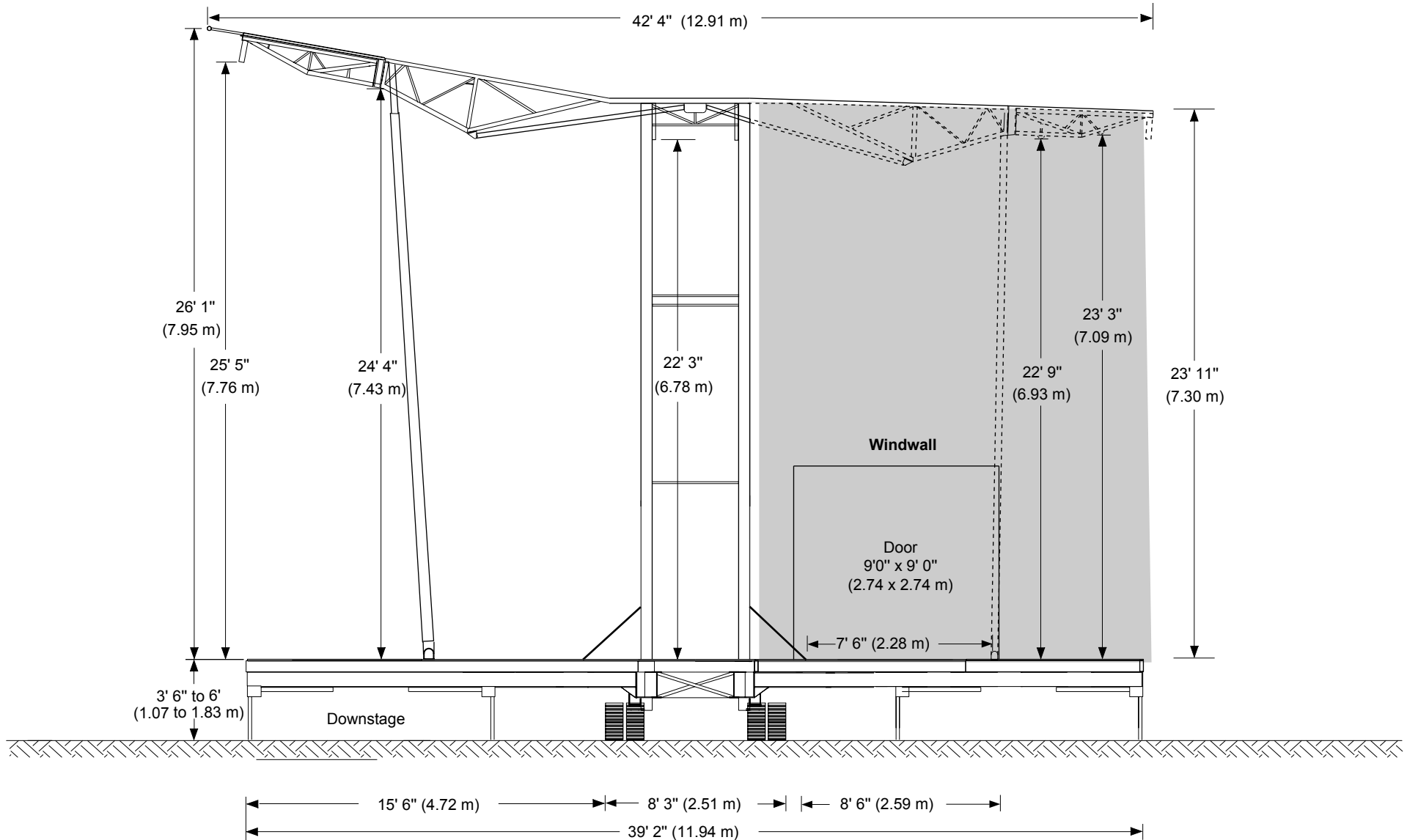
Mass & Dimensions

Stageline SL 320



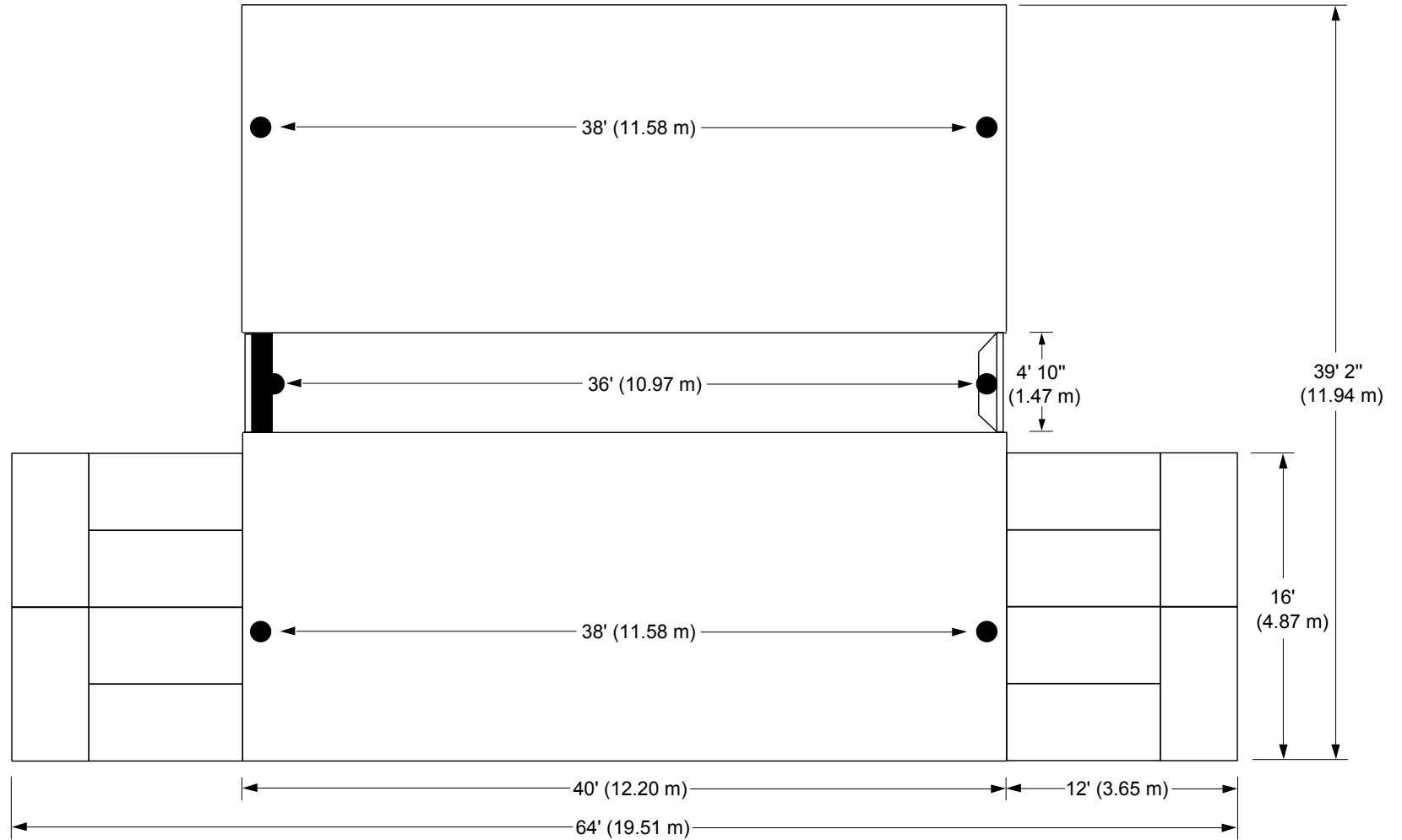
Front View with Windwall and Banner

Stageline SL 320



Side View with Windwall

Stageline SL 320



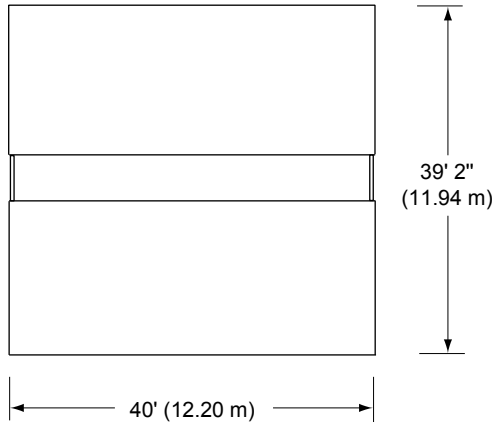
Downstage

Capacity: 100 lb/ft² (490 kg/m²)

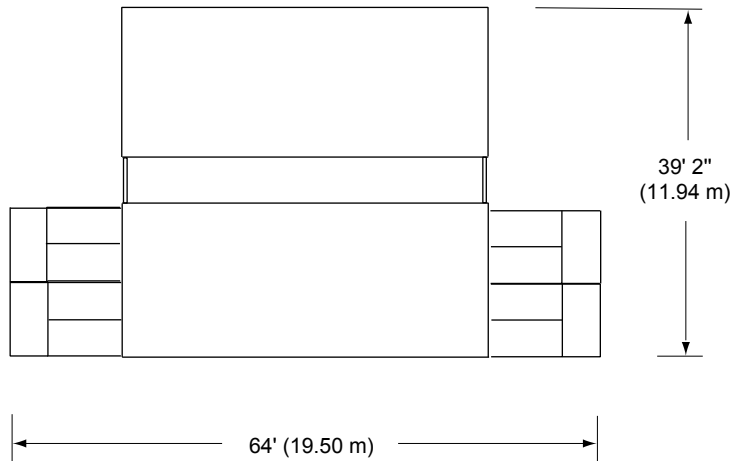
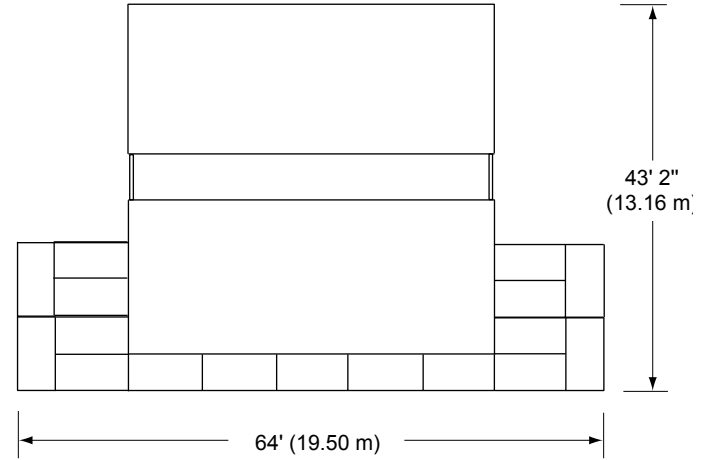
Floor View

Stageline SL 320

Standard



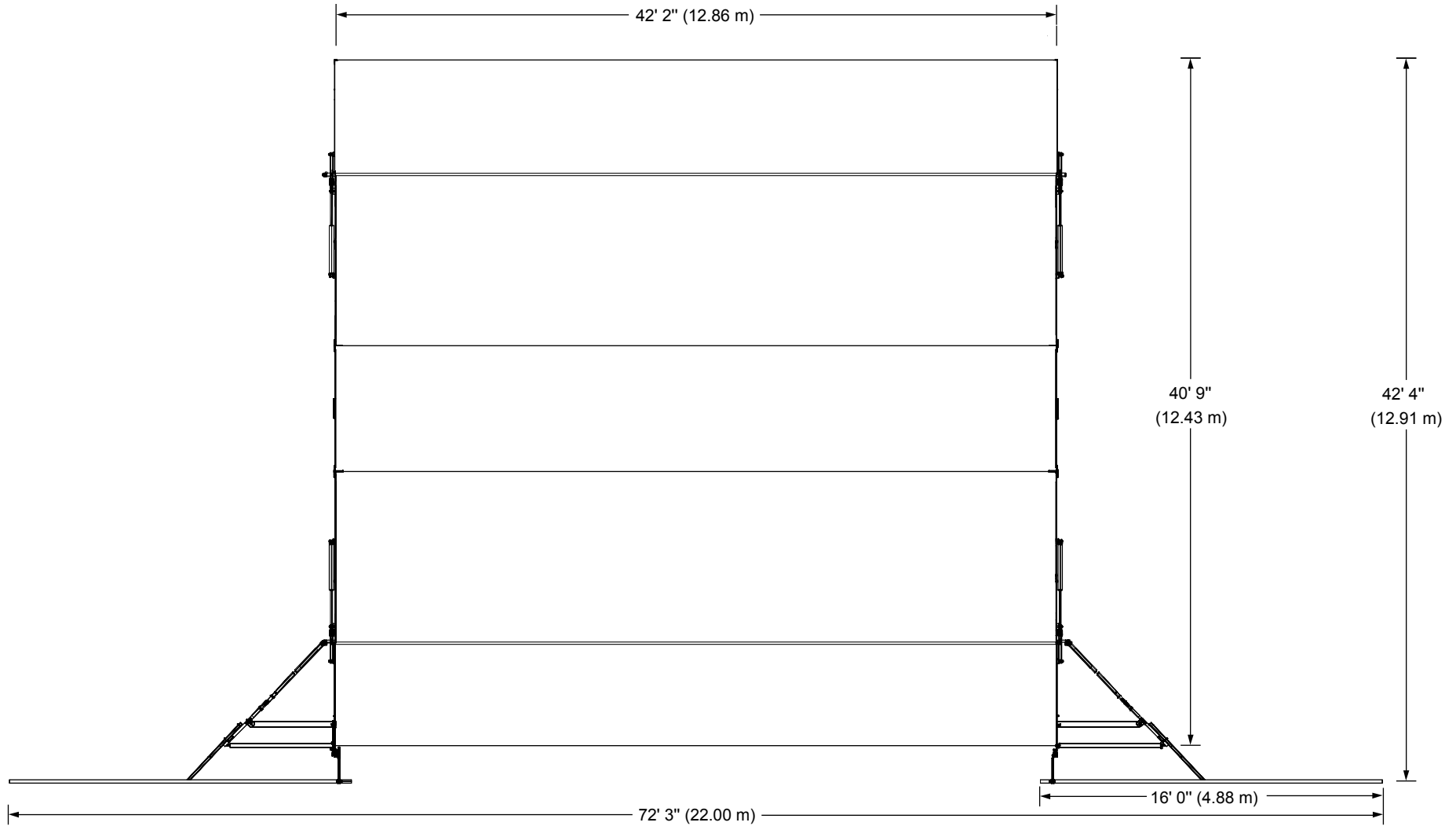
Other Available Configurations



□ = 4' x 8' (1.22 m x 2.44 m)
N.B. One guardrail per 4' (1.22 m)

Extension Platform Layouts

Stageline SL 320



Roof View with Banner

Stageline SL 320

A thorough understanding of the inter-related loadings shown in this rigging plan is needed in order to safely use this mobile stage roof and to take full advantage of the many rigging opportunities it offers.

This mobile stage roof offers a variety of rigging options with regard to load capacity, placement and type.

There are trusses, rigging pipes, front overhang rigging pipes, side overhang rigging beams, line array rigging beams and roof rigging points.

This rigging plan locates and defines these rigging features, includes load capacity for each and describes maximum combinations of loads amongst features.

Take note of exclusions, maximum sub-totals in a group, load balance requirements, maximum lifting capacity of roof and maximum rigging load on roof.

The maximum load on the roof is less than the sum of the maximum load on each rigging feature.

RIGGING RESTRICTIONS

Use both P1s or P2s or P3s, P4s or P5 alone on each T1 truss.

Use both P6s or P7s or P8s or P9 alone on each T2 truss.

Do not load more than 1000 lb (454 kg) on each twin set of P10 in upstage roof panel.

Do not load more than 500 lb (227 kg) on each twin set of P11.

Do not load P11 concurrently with truss T2 when windwalls are installed.

Do not load P12s concurrently with P13 to P15.

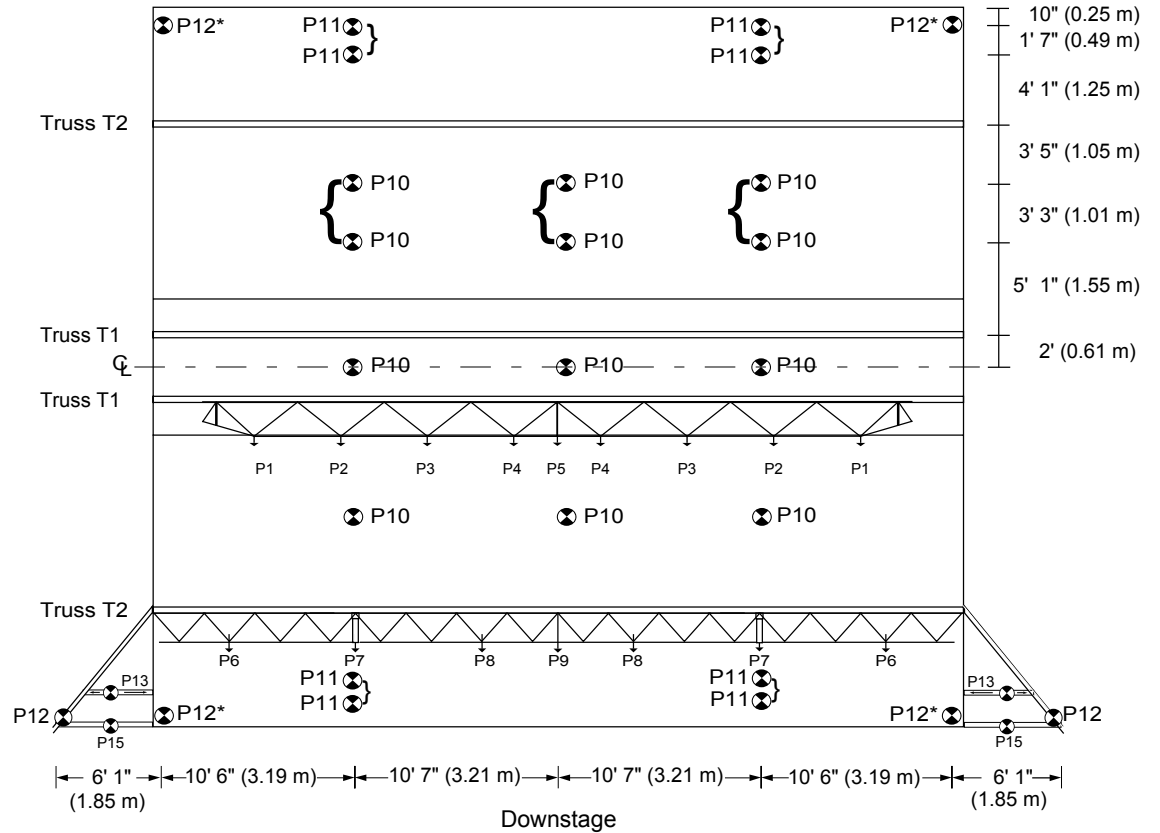
P12*s can not exceed 1000 lb when windwalls are installed.

Total load of P12s to P15 must not exceed 4000 lb (1814 kg).

If installing banner rigging bars, total load of P12s to P15 must not exceed 3000 lb (1360 kg).

Note:

Outside diameter of rigging bars and of lower chord of trusses is 2" (5 cm).



Maximum Load Bearing Capacity - 16000 lb (7257 kg)

Rigging Point Maximum Load Capacity		
Point No.	Lb	Kg
P15 (See rigging restrictions)	4000	1814
P12	2000	908
P1 & P2	1500	680
P3	1200	544
P6, P10 & P13	1000	454
P4 & P5	700	318
P7	650	295
P11	500	227
P8 & P9	400	182

Rigging Plan - Unit No. 271 and down

Stageline SL 320

A thorough understanding of the inter-related loadings shown in this rigging plan is needed in order to safely use this mobile stage roof and to take full advantage of the many rigging opportunities it offers.

This mobile stage roof offers a variety of rigging options with regard to load capacity, placement and type.

There are trusses, rigging pipes, front overhang rigging pipes, side overhang rigging beams, line array rigging beams and roof rigging points.

This rigging plan locates and defines these rigging features, includes load capacity for each and describes maximum combinations of loads amongst features.

Take note of exclusions, maximum sub-totals in a group, load balance requirements, maximum lifting capacity of roof and maximum rigging load on roof.

The maximum load on the roof is less than the sum of the maximum load on each rigging feature.

RIGGING RESTRICTIONS

Use both P1s or P2s or P3s, P4s or P5 alone on each T1 truss.

Use both P6s or P7s or P8s or P9 alone on each T2 truss.

Do not load more than 1000 lb (454 kg) on each twin set of P10 in upstage roof panel.

Do not load more than 500 lb (227 kg) on each twin set of P11.

Do not load P11s concurrently with truss T2 when windwalls are installed.

Do not load P12s concurrently with P13 to P15.

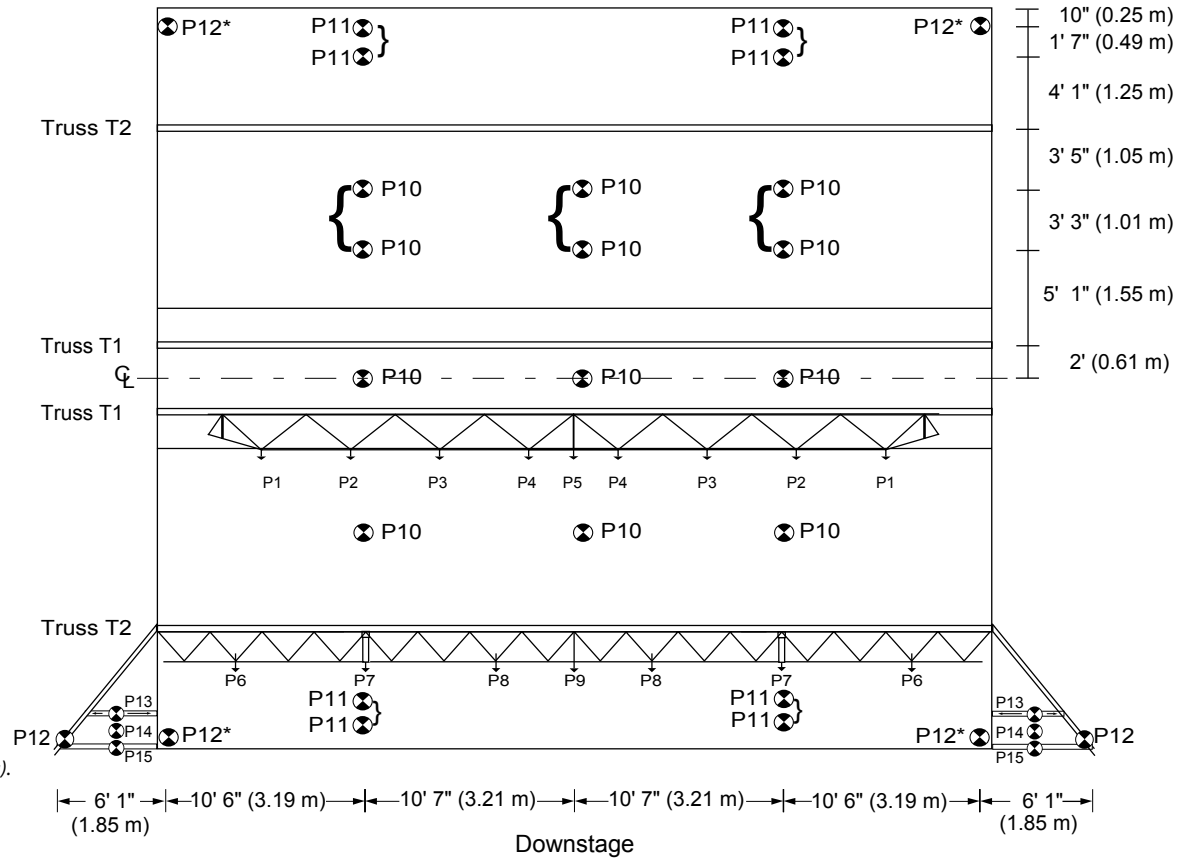
P12*s can not exceed 1000 lb when windwalls are installed.

Total load of P12s to P15 must not exceed 4000 lb (1814 kg).

If installing banner rigging bars, total load of P12s to P15 must not exceed 3000 lb (1360 kg).

Note:

Outside diameter of rigging bars and of lower chord of trusses is 2" (5 cm).

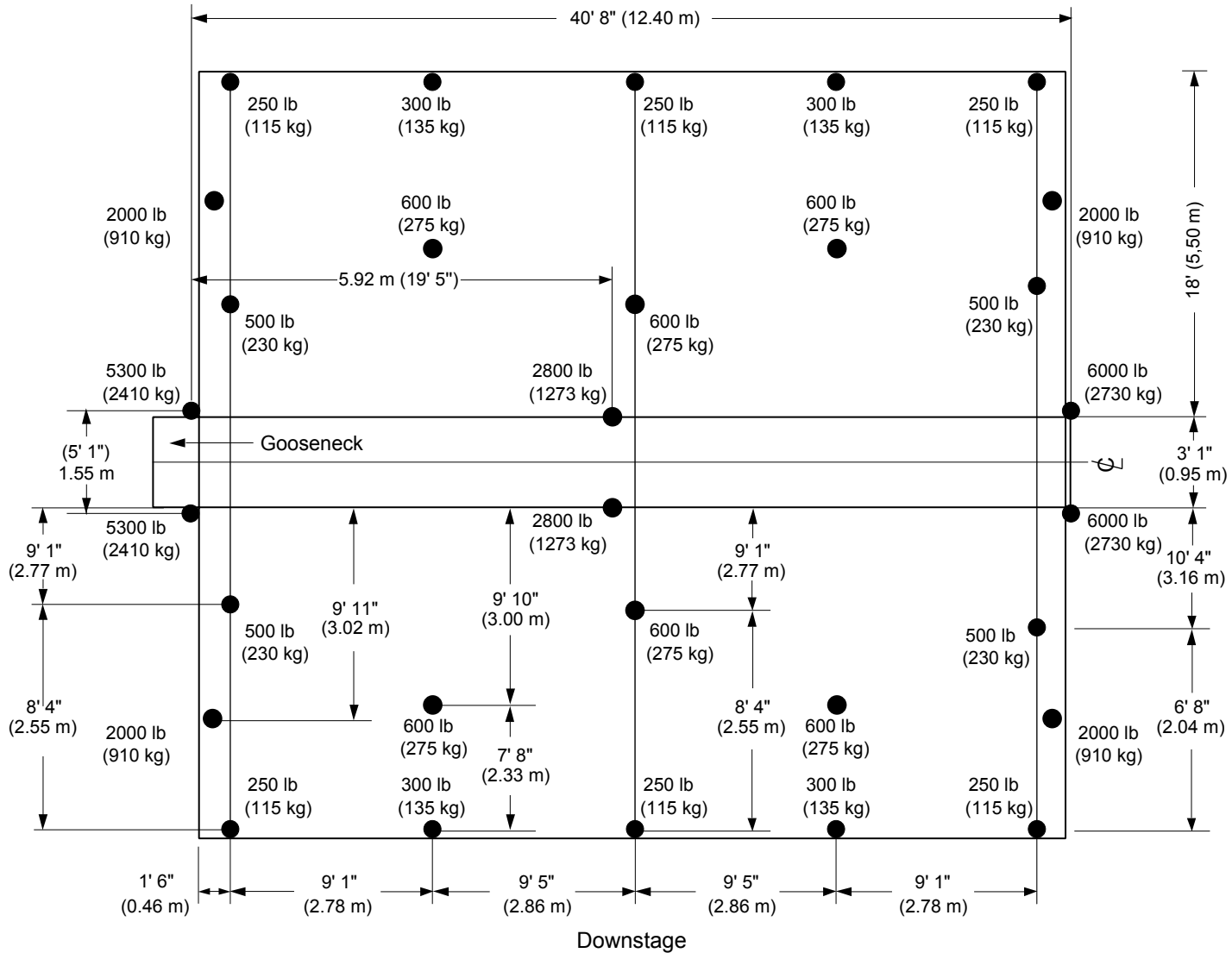


Maximum Load Bearing Capacity - 26000 lb (11793 kg)

Rigging Point Maximum Load Capacity		
Point No.	Lb	Kg
P13, P14 & P15	4000	1814
P12	2000	907
P1 & P2	1500	680
P3	1200	544
P6 & P10	1000	454
P4 & P5	700	318
P7	650	295
P11	500	227
P8 & P9	400	182

Rigging Plan - Unit No. 272 and up

Stageline SL 320



● : Floor stabilizers, extension and levelling jacks.

Note: For additional live load information, refer to Stageline technical department.

Dead Load Ground Support